



Girlguiding BGIFC



Autumn / Winter 2004 ~ Newsletter British Guides in Foreign Countries

Dear Guider

I do hope that you have had a good summer break. Sadly, if you came to the UK the weather did not live up to the expectations of last year.

I so enjoyed our week at Waddow when fortunately the weather was very kind. It was an excellent week and so good to meet many of you and have quality time for a proper chat.

The new Rainbow material looks lovely and I am sure all the Rainbow Guiders will enjoy using it. I hope those of you who came to Waddow can still remember the song!

Plans are now being made for the Event at Foxlease from 16th - 23rd July 2005. We were fully-booked last time, so get your booking in as soon as you can.

As you know our Web site has been re-vamped over the summer. It will be up and running at the beginning of October, so do remember to log on to:



www.BGIFC.org.uk

The new term is now under way and I hope all is going well in your Units. Let us know if we can help you in any way at all and do keep in touch and let us know what is happening in your part of the world.

Enjoy the rest of the term.

Best wishes

Vivienne Scouse
Commissioner - Girlguiding BGIFC

We must say goodbye this time to Joy Conlon, Pauline Wainwright, Carole Maher, Pat Wright and Sue Jiggins. They have all been staunch supporters of BGIFC for five years or more and we have been very lucky to have their expertise and support.

They are all continuing with Guiding in one way or another. Once a Guider always a Guider... It just seems to get into your system!

We say a big 'thank you' to them and wish them well for the future!
Vivienne Scouse

New BGIFC Stickers



51mm metallic stickers.
£2 for 10 Available from the
Girlguiding BGIFC Office.

BGIFC Directory

never heard of such a thing?
Email: BGIFC@girlguiding.org.uk
for a free copy.

Hi I have recently taken over as your W/R.
Administrator.

This is completely new to me so please bear with
me until I master the procedure.

Shirley Thompson.

ON THE MOVE

The procedure for transfers has recently changed.

If you are an Adult returning to the UK you **no longer complete a Transfer form (T/A)**. Instead contact Jeannette for a print-out of your personal guiding appointment details from the BGIFC database and then forward this to the Country or Region office of the area you are moving to.

If a girl or young woman in your unit is moving home and wishes to continue guiding, please complete a **Transfer Card (T/C)** and pass it on to the girl or her parents. Email Jeannette for a contact for the new area. When the girl attends the first meeting in her new unit, the card can be handed over to the Unit Leader.

There are more details of the transfer procedure on the Transfer Card, Trading Services order code 6762, price £1 for 10, or you can download it from www.girlguiding.org.uk. Just enter 'transfer card' in the search box on the home page.

You can find the **updated Transfer procedure** in *Guiding Manual*, 4th edition, published last January (code 6455, price £6, from the Trading Service).

In any case please send your new address and date of your move as soon as possible to Jeannette in the BGIFC Office at: BGIFC@girlguiding.org.uk

From October new guiding service brooches and certificates for 5, 10, 20, 30 and 40 years will be available from Trading Service. They **MAY ONLY** be ordered through the BGIFC Office as it is the designated address:

5 year badge and certificate	£2.00
10 year brooch and certificate BGIFC	£8.00
20 year brooch and certificate BGIFC	£10.00
30 year brooch and certificate	£15.00
40 year brooch and certificate	£20.00
plus carriage charge	

We welcome these New Units

2nd Brussels Guides
(Benelux & France
County)
1st Paphos Brownies
(Cyprus County)

Re-opening:
1st Alfaz del Pi Guides
(Spain)



BGIFC AIR 05

Come and join us at
Foxlease
16th - 23rd July 2005
Application forms will be
available from mid
October 2004

New BGIFC Friendship pin

Ideal to give to your
Friends.
£1.00 each
available from the
BGIFC office.



Please, please make sure you fill in all forms in **BLACK INK** particularly if it has to be faxed.
Also remember complete postcodes are required.

CENSUS 2005 forms will be sent out in November.

Please make sure that your updated District's / Unit's / Guider's details are at the BGIFC Office by the middle of October 2004.

BGIFC subscription for 2005 will be £16.00.

A **personal detail form** (PDF) will be included in

February 2005 Guiding Magazine.

Please ensure you check the details are correct and return it to the person who is completing your unit census.

Getting to Know You

Leadership Co-ordinator

Having enjoyed my time as a Brownie, Guide and Ranger Guide way back in the seventies, I then had little real contact with the Movement for many years and, as a mother of three boys, I did not expect to become involved again! However, two years ago, whilst living in Germany, I was approached and, after some persuasive follow up phone calls, I volunteered to take on the position of County Commissioner for Girlguiding British Guides in Germany. I quickly found myself working amongst some very experienced and enthusiastic Guiders: talk about a steep learning curve! Since our stay in Germany was only two years long, my tenure was relatively short and by the time I felt that I had some idea about what I was supposed to be doing, it was time to move back to UK. On arriving back in England, I was asked to consider taking on the role of Leadership Co-ordinator for BGIFC. So, once again I am embarking on a programme of learning and I hope that you will forgive any mistakes that I might make over the forthcoming months!



As for my 'other' life, my husband's job sees us moving regularly and sometimes overseas. Our best family posting was Cyprus which was really like one long holiday for the family. I am a science teacher and generally try to pick up some part-time work wherever we are living. I started a full time teaching post at a girls' prep school this term. In addition to Guiding, I enjoy walking and tennis.

Sally Inshaw

PR Adviser and Website Editor



Hello I am the face behind the Public Relations, Marketing and Communications. China mugs, galleon stickers, newsletter and website, that's me.

When I was seven I joined the local Brownie Pack and said to Brown Owl "I am going to be a Brown Owl one day" and I was. Since then I have been a 'has been' District, Division and Assistant County Commissioner for Staffordshire county and a young leader guider.

I met my husband David whilst trying to learn to bell ring at our local church. He was an expert ringer and I was completely useless. For five years we ran a thriving male and female Venture Scout Unit together with numbers ranging to 30 members at its peak. Recently we celebrated 25 years of marriage with a fabulous holiday on the Orient Express to Venice and Florence. We live in Penkridge, a small town in the middle of England, and have a son and daughter who both live at home. Robert, 23 who runs a successful and rapidly growing tree surgery business from home, which helps to fill my days and Sarah, 18 who is in the final year of a foundation graphic designer course.

Being a lady of leisure, I lunch, shop, pop into the BGIFC Office, cook, clean and play with the computer. To relax I collect Guide Badges and eat chocolate.

Pam Keay

Advisers News

Guiding Development

A BIG THANK you to all who helped make the Wadow event such a success. Everybody seemed to enjoy the variety of trainings and of course meeting each other.

Already we are sorting out the next event which will take place at **FOXLEASE** and will of course be for girls and adults.

Going by the number of enquires this summer so far I think it will be a case of as soon as the application forms are available to you in January return them as quickly as possible. The dates are **16th to 23rd July 2005**. Further information on our website.

The Guiders in Singapore, Kuala Lumpur, Brunei and Germany are getting ready for their training days and weekends. These will be taking place during September and October and the Middle East are putting together their training programme for February 2005.

Pauline Dobson a prospective trainer in Germany is returning to the UK in October. I thank her for all that she has done whilst being the Programme and Training Adviser and know that once she has settled back home she will contact her Mentor and complete her personal training programme.

Various Guiders have expressed an interest in becoming trainers and currently the 'paper work' is being processed at CHQ. If you are interested then please do contact me for a chat and or apply direct to CHQ for an information package.

Phyllis Thompson

International

Hello! On the 1st September 2004 I took over from Joy Conlon as your International Adviser. I am delighted to be joining you in BGIFC. I attended part of your residential event at Wadow this summer and enjoyed meeting and talking to quite a number of you. You provided me with a very warm and friendly welcome.

In my role as International Adviser I will be providing you with information about International events for both young people and adults. I will do this as quickly as possible when I receive the information. This will allow you time to consider the information and then make contact with me to discuss progression of your application through our agreed selection process.

International Guiding however is not just about large scale events and international living experiences. It is about raising the awareness amongst our members that we are part of one of the largest International organisations for girls and women. It is also about encouraging our members to understand and participate in the multicultural environments in which we live in a positive way. I hope that in relation to these issues you will contact me if you need help with any programme or project initiatives you may be planning.

September Guiding provides information about 'One World week' 17th-24th October. There is an action Kit available and this can be purchased on line. Website details can be found on page 20 of September Guiding. You are not restricted to using the activities just for this week.

Do please contact me if I can help you or assist you in finding information.

Dorothy Naylor

Outdoor Activities

Walks for the World. It is not too late to take part in this initiative. Organise a walk or a related activity, earn money for WAGGGS and your own area, and then wear the badge to show your participation. 2005 is approaching; perhaps you could use this to fund raise towards travel costs for your members who are going to attend our event at Foxlease.

Residentials. Congratulations to our Rainbows in Japan! They were the first Rainbows in BGIFC to take part in a residential event. Mary Taylor and team reported on a happy and successful event when the Rainbows became pirates for a night. Any Rainbow Guider can work towards her Overnight Licence to take her Unit away. The new publication 'Rainbow Overnights' (order ref. No. 6694) is now available to help you keep up to date with good practice.

All Sections now have an updated book about residential events. The 'Going Away with Brownies/Guides/Senior Section' books have replaced the earlier publications of 'Camps and Holidays', 'Greatest Adventure' and 'Catering'. If you take your Unit away it is a good idea to keep yourself up to date by reading these books. Of course, you also need to refer to the current 4th edition of 'The Guiding Manual'.

Please remember that I am at the end of fax/email/phone should you need any help with residential events or any outdoor concern. It's good to see that BGIFC Guiders are gaining qualifications and taking their girls away. It is helpful to give the girls a taste of a residential event before you encourage them to join us for a week at Foxlease in July 2005.

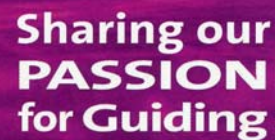
Sue Sotheran

Congratulations to our members who have gained qualifications:

Sarah Barker, Muscat Brownies,
Brownie Overnight Licence
Vanessa Hopwood, Dubai Guides,
Guide Camp Licence
Amanda Penn, Versailles Brownies,
Brownie Overnight Licence
Kim Shukla, Brussels Brownies,
Brownie Holiday Licence
Sue Young, Muscat Guides,
Guide Camp Licence
Jayanika Samaranayake, UAE Senior
Section, Holiday Permit with peers

PR Adviser and Website Editor

Recruitment
Week 2004
(8th - 14th
November) is
the perfect



Sharing our
PASSION
for Guiding

opportunity to share your passion for guiding.

A support pack is in Octobers *Guiding* magazine.

Posters are available through Trading Services. You only pay for postage and packing.

Press Release Templates

For Walks for the World and the launch of the new Rainbow programme are available from pamkeay@hotmail.com

Your photographs are always very welcome. We now have a gallery on the new BGIFC website where we can include good quality picture.

Take a look www.BGIFC.org.uk

Inclusion will be at the discretion of the editor.

Please ensure parents/guardians are happy for photographs of their daughter/ward to be used in Guide Association publicity or publications.

Pam Keay

Rainbow Guides



Welcome to our new programme - the Rainbow Jigsaw!

I have circulated introductory information to County and District Commissioners, and Independent units, and many of you will have benefited from training given by guiders who were at Waddow in July. I am sorry if any Rainbow Guiders have slipped through the net - please email me and I will send you details.

The new Rainbow website was also launched in August and is in three sections - information for guiders and parents, and interactive activities for the girls. It is well worth a visit. Among other things, you will be able to listen to the new rainbow song in the guiders' section.

Don't worry if you haven't been able to get hold of your resources yet, we have a whole year to implement the new programme.

I would love to know how your launches go and how you are getting on with the programme. If you are having any problems or there's something you are not sure about, please don't hesitate to get in touch.



Happy looking, learning, laughing and loving!

Lesley Irvin

Brownie Guides

It was lovely to see so many of you at Waddow. I really enjoyed the training sessions that I took.

Thank you to those of you who have sent photos and details of 90th birthday celebrations. Please let me know what you have done so that I can put them in

a BGIFC Brownie 90th Birthday Celebration book.

Please keep in touch.

Bridget Sutters

Guides

As this will be my last newsletter can I take the opportunity of thanking everyone in BGIFC for 14 of the happiest years I have spent in Guiding. During these years I have met so many very special people and have so many very special memories.

To everyone in BGIFC I wish you peace and happiness, and many more happy years of Guiding.

Carole Maher

Hello,

Please may I introduce myself as your new Guide Adviser. I am a Guide Guider, trainer and Baden-Powell Adventure Co-ordinator for Durham South County. Like you I return to my unit after the summer break to introduce the new Go-for-It, Blast from the Past, helping the patrols to consider ones they have not yet done, asking the girls to give their suggestions for future programmes and activities and review their Unit Guidelines.

Enjoy this term's guiding.

I enjoyed meeting some of you at Waddow and look forward to meeting more of you and some of your guides at Foxlease, next year. I am happy to take on board the suggestion, made at Waddow, to write a 'Go-for-It BGIFC' which the girls can work on during the camp. Please send me any suggestions you may have for inclusion in this.

Do not hesitate to contact me if you need help, advice or clarification about any aspect of the guide programme.

Margaret Sinclair

Senior Section

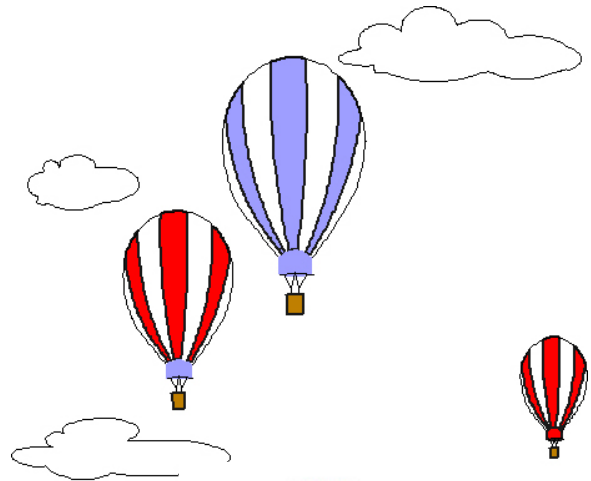
We had a really great week at Waddow. It was good to have the seven Young Leaders taking part. Old friends reunited and new ones joining, everyone enjoyed the trainings in their relevant sections and having their own activities as well. It was lovely to see how everyone integrated into the group as a whole.

Margaret Clarkson, a Senior Section trainer from N.W. England, gave the girls and adults a day filled with new ideas.

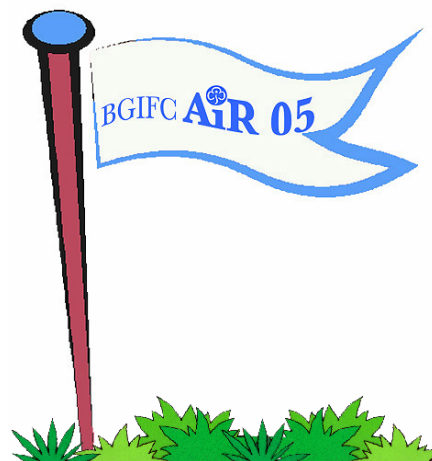
Innovate at Latimer College near Bedford, February 2005. This is a very popular event and 2 girls from The Hague have booked. Let BGIFC have a say on all the issues, encourage any Young Leaders or Guiders under 26 to attend. It can be used for Queen's Guide as a residential or for part of the Service in Guiding clause. See the Senior Section page of the Association web site. Also register for a monthly Senior Section e-update at www.girlguiding.org.uk/info/login/register.asp Next year will see the Review of the Senior Section programme "E'05." Different ways of carrying out the evaluation and obtaining opinions are being considered. This will include an online monthly questionnaire so watch out for details of this so that you can register. There will be a Senior Section Activity and Evaluation Event, June 24th to 26th 2005 at Blackwell Court, near Droitwich, called "Count Down to Zero". More news of that in October "Guiding". Look out for the Logo!

Above all there will be a Senior Section sub camp at our event at Foxlease from July 16th 2005. This will be an amazing sub camp - even better than in 2003. Want to be part of it, try activities only for 14+. Yes? Then join us there by applying as soon as the forms are available.

Pat Mayle



Come and join us at
Foxlease
16th - 23rd July 2005
Application forms will be
available from mid
October 2004



Friends of Girlguiding BGIFC



It was very good to see a fair representation of The Friends at the Betty Clay Memorial Service in Wells Cathedral in June. The service was a moving reminder of what a wonderful Guide she had been right up to the end of her life.

In a recent communication with Anne Dunford about recruiting more Friends she said that we need to be able to say "BGIFC really needs you because" and "This is what is in it for you. Friends need to **GIVE** and **GAIN**". It is true of everything we do that support from other people is a wonderful motivator and at times of difficulty a great relief. Friends of BGIFC is one strand of support to our British units overseas through our ability to give some financial help when needed and sometimes practical assistance with such things as putting together the sewing kits and a helping hand in the office.

What do we gain? A Newsletter to keep us in touch with BGIFC, an Annual Get together to meet old friends and review what the Friends are doing and perhaps the satisfaction of knowing that we are keeping a part of Girlguiding active in foreign parts. We thought that perhaps Friends might like to meet on an informal basis and this is why we decided to organise an outing to Salisbury. If it is well supported, we hope to do this in other areas of the country too. The cloth badges have sold really well but the quiz not quite so well, but it all helps with funds and publicity. Your Committee meet on 3rd November, so if anyone has thoughts on **GIVE** and **GAIN**, or any other matters, I will be really pleased to receive them.

It is my personal opinion that we join Friends groups, wherever or whatever they may be, because in our heart of hearts, and perhaps through our own experiences and involvement with them, we wish to see them prosper.

I hope that you have been able to enjoy your summer and those of you who have helped with camps and pack holidays, that the weather was kind. This is my last year in uniform and as a special treat we are taking our Brownies for 3 nights on HMS Belfast moored by London Bridge. We can imagine sailing away to foreign parts on the BGIFC ship, and for me that brings back happy memories of many overseas visits with Girlguiding.

With every good wish.

Delysia Barker

Friends of Guiding Groups in Girlguiding BGIFC

District Commissioners-

Have you thought about starting a Friends of Guiding group in your District?

A FoG group can give financial and moral support and can provide fun ways of fund raising for your District.

I have a Resource Pack giving helpful details about how to set up a group, which I can send you.

You can contact me at brenda.leece@ntlworld.com or through the Girlguiding BGIFC Office.

I hope that everyone has had a good Summer holiday and that you are all back enjoying Guiding again.

Brenda Leece (Co-ordinator, Friends of Guiding Groups Girlguiding BGIFC)



WHO'S WHO AT Girlguiding BGIFC

Commissioner

Assistant Commissioner

Vivienne Scouse

Phyllis Thompson

viviennescouse@aol.com

phyllis@bgifc.fsnet.co.uk

Girlguiding BGIFC Advisers

Financial

Gill Crapper

rogergillcrapper@hotmail.com

Guiding Development

Phyllis Thompson

phyllis@bgifc.fsnet.co.uk

International

Dorothy Naylor

naylordor@aol.com

Leadership Co-ordinator

Sally Inshaw

t.inshaw@tiscali.co.uk

Outdoor Activities

Sue Sotheran

sotherans@clara.co.uk

Public Relations&Website

Pam Keay

pamkeay@hotmail.com

Rainbow

Lesley Irvin

family3irvin@aol.com

Brownie

Bridget Sutters

bridgetbrownies@blueyonder.co.uk

Guide

Margaret Sinclair

margaret@parade6.fsnet.co.uk

Senior Section

Pat Mayle

patmayle@fsmail.net

Registrations

W/R Administrator

Shirley Thompson

shirley@parade6.fsnet.co.uk

Registrations

Jeannette Crosier

BGIFC@girlguiding.org.uk

Friends of Girlguiding BGIFC

Chairman

Delysia Barker

delysiajb@aol.com

Secretary

Kate Dean

kate.dean@aberdale.demon.co.uk

Treasurer

Don Fisher

fisher@pam-don.freemove.co.uk

Girlguiding BGIFC Office

Administrator - Jeannette Crosier

c/o Commonwealth Headquarters CHQ 17-19 Buckingham Palace Road
London SW1W 0PT United Kingdom

Tel: 0044 (0) 20 7592 1814 (Direct Line).

Fax: 0044 (0) 20 7828 7951

Via CHQ: 0044 (0) 20 7834 6242-Ext 354

Email: BGIFC@girlguiding.org.uk Web site: www.BGIFC.org.uk

Newsletter Deadline 31st January 2005 for issue 22nd February 2005

Please send your contributions to the editor

pamkeay@hotmail.com or The Girlguiding BGIFC Office

The editor reserves the right to alter any text submitted.

Girlguiding BGIFC is an operating name of The Guide Association BGIFC
a registered charity.